



Transit & Mobility Software Built by Operators, for Operators

A configurable SaaS platform that lets operations leaders design, run, and analyze almost any transportation service—with full flexibility.



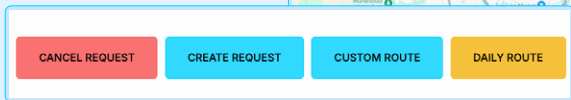
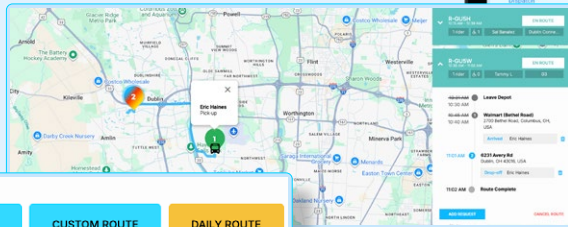
BUILT BY OPERATORS, FOR OPERATORS



Give your ops team the control they've always wanted.

Most platforms force your team into rigid workflows. SHARE Mobility takes the opposite approach: it was built with operators, dispatchers, and fleet managers at the table, so the way the product works reflects how real operations actually run day-to-day.

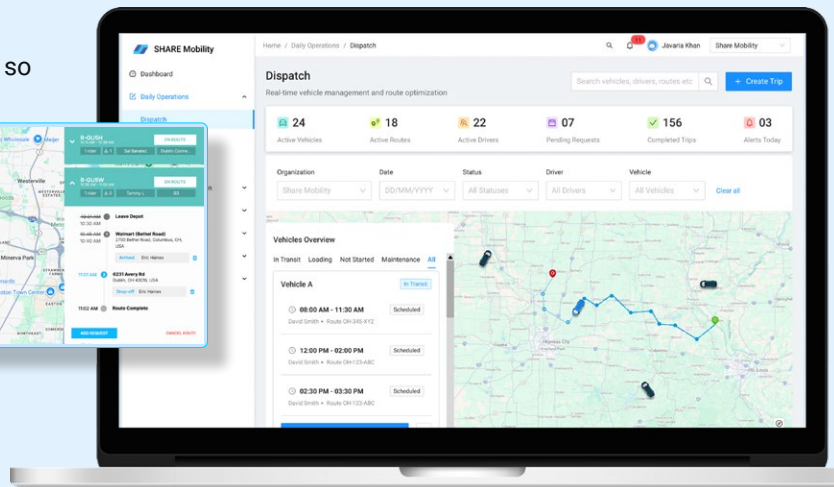
- Interfaces designed around dispatch, driver, and rider workflows
- Fewer workarounds, fewer spreadsheets, fewer one-off tools
- One platform to manage riders, trips, vehicles, and performance—across municipal transit, medical transport, and contract operations
- Designed to help you “do more with fewer vehicles” so you can control costs while improving service quality



Powered by a nimble, industry-focused engineering team.

Behind the product is one of the most focused engineering teams in the mobility space—people who understand transportation, data, and real-world operations.

- Engineers who specialize in transit, NEMT, and contract fleet operations
- Short feedback loops from customers directly into the roadmap
- Ability to quickly ship improvements and respond to market changes



Purpose-built for transit, medical transport, and transportation operators.

CONFIGURE ANY SERVICE DESIGN



The most easily customizable platform on the market.

SHARE Mobility is built to flex around your service design—not the other way around. Operations leaders can configure services, zones, rules, and resources from the admin portal, without needing a custom build every time something changes.

Design the service mix you actually operate:

- Fixed route, microtransit, on-demand, and flex route services
- Co-mingle passenger types (e.g., ADA + non-ADA, different payer types) safely and efficiently
- Mix scheduled, subscription, and ad-hoc trips in one platform

Control geography, vehicles, and rules with precision:

- Define distinct geofenced zones or overlapping zones for complex coverage
- Restrict vehicle resources to a single service or share them across services to “increase trips per vehicle per day”
- Configure business rules by service, zone, rider type, or payer (e.g., eligibility, capacity, time windows, priorities)

AI-powered routing with human override:

- Automatic dynamic routing and dispatching powered by AI
- Real-time re-optimization as demand changes throughout the day
- Manual override so dispatchers can reassign vehicles, adjust trips, and handle exceptions with confidence



Open API & integration strategy.

SHARE Mobility is designed to plug into the tools you already use so you can modernize without a disruptive rip-and-replace.

- Open APIs to connect with HR, payroll, telematics, CAD/AVL, broker systems, and more
- Integration strategy focused on fitting into existing workflows and data flows
- Minimized change management for drivers, dispatchers, and riders

A ROBUST & FLEXIBLE ANALYTICS PLATFORM FOR MOBILITY



Turn your operations data into a strategic asset.

SHARE Mobility doesn't just capture data—it makes it usable. From standard transit KPIs to contract- or payer-specific metrics, the platform gives you the reporting and analytics layer you wish you had years ago.

Customizable reporting for any stakeholder:

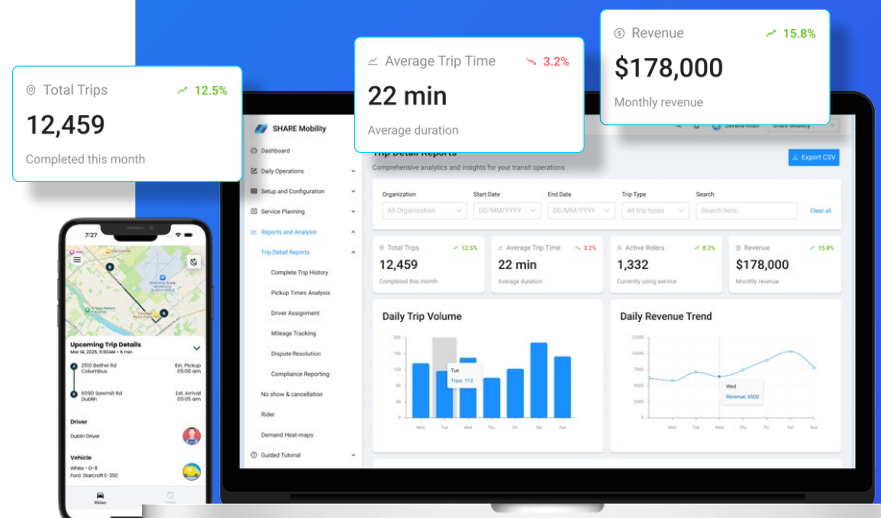
- Build and save custom reports on riders, trips, routes, stops, vehicles, and drivers
- Export clean datasets for finance, planning, compliance, and reimbursement teams
- “Prove your ROI to stakeholders with comprehensive ridership analytics” and performance summaries

Custom dashboards & visualizations:

- Role-based dashboards for operations leaders, dispatchers, and executives
- Visualize on-time performance, no-shows, demand patterns, dwell time, and more
- Compare performance across zones, services, contracts, payers, or time periods

Cross-industry financial benefits:

- SHARE pays for itself: most clients see positive ROI within 6 months
- Proactive service alerts flag issues early—helping prevent costly service disruptions, protect on-time performance, and extend vehicle life
- Data-driven insights identify your most profitable routes and service times



See how SHARE Mobility adapts to your operation.

Whether you manage fixed-route, microtransit, demand-response, NEMT, or a blend of them all, SHARE gives you one configurable SaaS platform to design services, run daily operations, and understand performance in real time.

Let's walk through your service design together.

✉ sharemobility.com/contact to schedule a live demo

☎ 833-742-7333

✉ sales@sharemobility.com